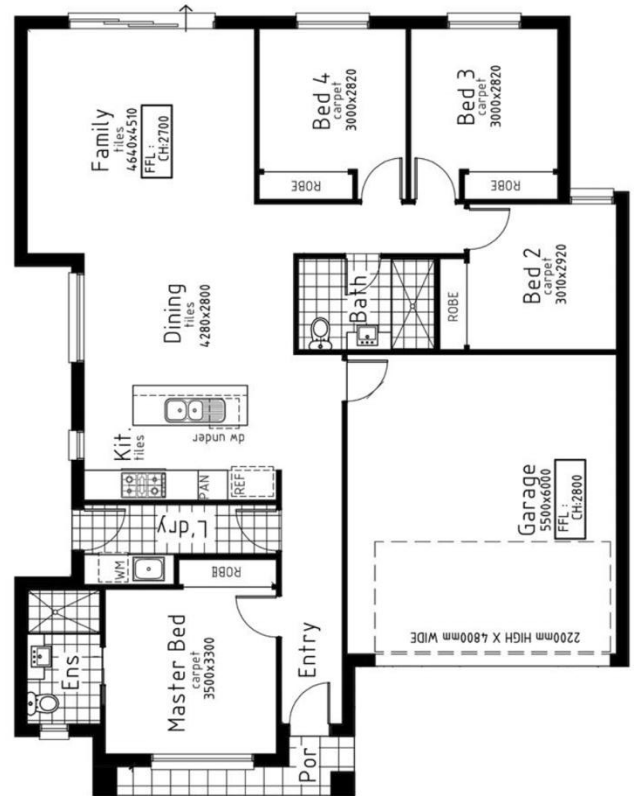


*LOT 2311 Dorper St, Windemere Estate, Mambourin
House Size 18sqm Land Size 263m²*

Essential Inclusions

- Customised Floorplans
- Fixed site costs*
- Coloured Concrete Driveway
- Laminate Flooring throughout & Upgraded tiles in Bathrooms
- LED lighting to Porch, entry, Kitchen, meals, Living & Bedrooms
- Brick infills above all windows & doors
- 2700mm ceiling heights
- Stone Benchtops to Kitchen & Bathrooms
- Ducted heating & Evaporative cooling
- All 7 Star Requirements all included
- Holland blinds
- 900mm Appliances
- All Black Tapware & Plumbing Fittings & All Essential range Inclusions
- **And so much more....**



*Images displayed in this document are for illustration purposes only and may depict upgraded items which are not included in the price. The price is based on land availability, inspection of the developer supplied engineering drawings, plans of subdivision and ASAC PROPERTY GROUP house floor plans. This package is subject to developer and council approval.