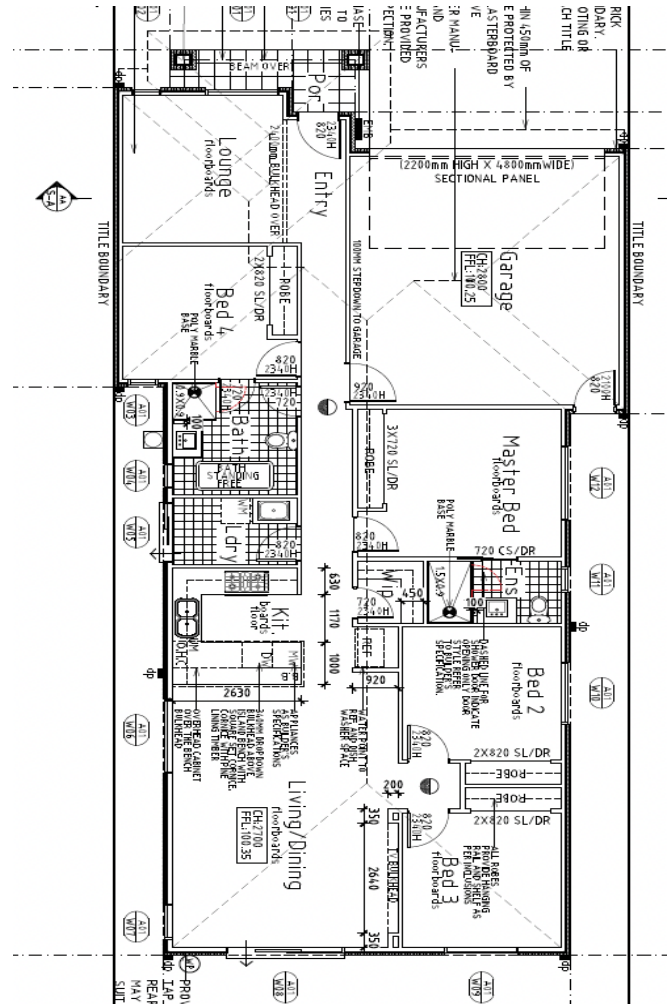


67 Kingdom Blvd, Weirviews
House Size 20sqqs *Land Size 294m²*

Turnkey Inclusions

- Customised Floorplans
- Fixed site costs*
- Coloured Concrete Driveway
- Flooring throughout - Carpet and tiles/Laminates
- LED lighting to Porch, entry, Kitchen, meals, Living & Bedrooms
- Brick infills above all windows & doors
- 2700mm ceiling heights
- Stone Benchtops to Kitchen & Bathrooms
- Ducted heating & Evaporative cooling
- All 7 Star Requirements all included
- Holland blinds
- 900mm Appliances
- All Black Tapware & Plumbing Fittings only *
- ***And so much more....***



*Images displayed in this document are for illustration purposes only and may depict upgraded items which are not included in the price. The price is based on land availability, inspection of the developer supplied engineering drawings, plans of subdivision and ASAC PROPERTY GROUP house floor plans. This package is subject to developer and council approval.

Call Sri Ph: 0404 164 211 Email: satyasri@asacpropertygroup.com.au www.asacpropertygroup.com.au