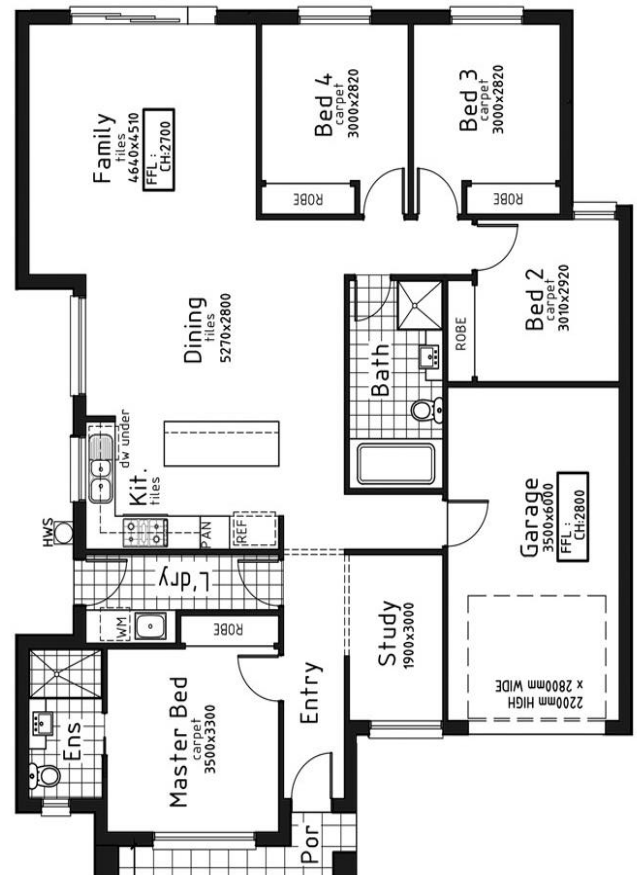


*LOT 248 Orchard Green Estate, Melton South  
House Size 20sq* *Land Size 392m<sup>2</sup>(CNR)*

*Turnkey Inclusions*

- Customised Floorplans & Fixed site costs
- Coloured Concrete Driveway
- Flooring throughout - Carpet and tiles
- LED lighting to Porch, entry, Kitchen, meals ,Living & Bedrooms
- Brick infills above all windows & doors
- 2700mm ceiling heights
- Perimeter concrete around the house
- Stone Benchtops to Kitchen & Bathrooms
- Ducted heating & Evaporative cooling
- Front landscaping
- Holland blinds
- 900mm Appliances
- All Design guidelines covered
- Letterbox, clothesline, Half share fencing
- **And so much more....**



\*Images displayed in this document are for illustration purposes only and may depicts upgraded items which are not included in the price. The price is based on land availability, inspection of the developer supplied engineering drawings, plans of subdivision and ASAC PROPERTY GROUP house floor plans. This package is subject to developer and council approval.

Call .... Sri Ph: 0404 164 211 Email: [satyasri@asacpropertygroup.com.au](mailto:satyasri@asacpropertygroup.com.au) [www.asacpropertygroup.com.au](http://www.asacpropertygroup.com.au)