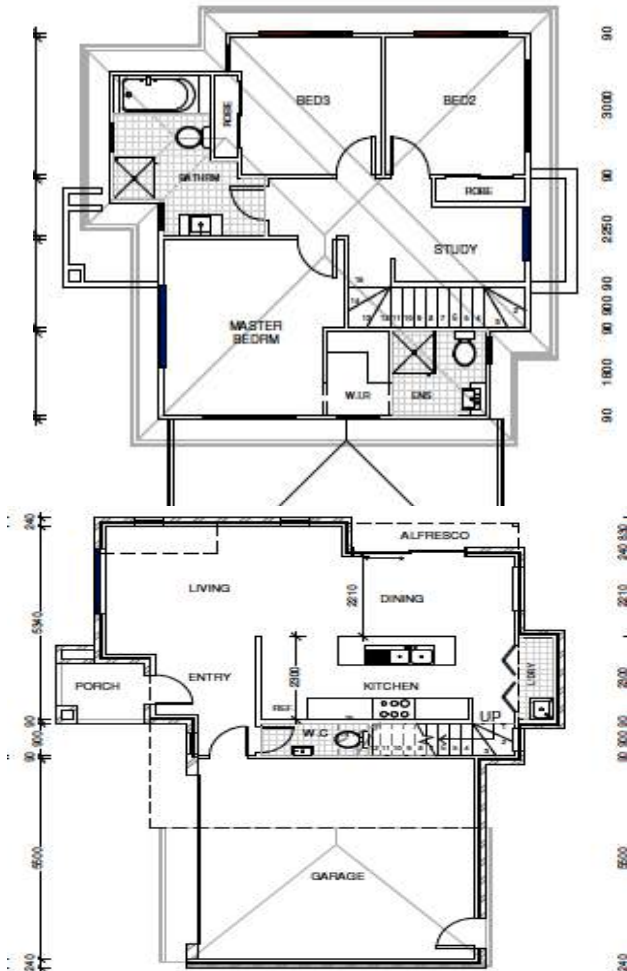




*LOT 1422 Wynbrook Estate , Wyndhamvale  
House Size 25Sqs D/S Land Size 484m2 Cnr*

*Turnkey Inclusions*

- Customised Floorplans
- Fixed site costs
- Coloured Concrete Driveway & Concreting to Front
- Flooring throughout - Carpet and tiles
- LED lighting to Porch, entry, Kitchen, meals and Living
- Brick infills above all windows & doors
- 2700mm ceilings heights
- Stone Benchtops to Kitchen & Bathrooms
- Ducted heating & Evaporative cooling
- Front & Rear landscaping
- Holland blinds
- All Design guidelines covered
- Letterbox, clothesline, Fencing
- **And so much more....**



\*Images displayed in this document are for illustration purposes only and may depict upgraded items which are not included in the price. The price is based on land availability, inspection of the developer supplied engineering drawings, plans of subdivision and ASAC PROPERTY GROUP house floor plans. This package is subject to developer and council approval.

Call .... Sri Ph: 0404 164 211 Email: [satyasri@asacpropertygroup.com.au](mailto:satyasri@asacpropertygroup.com.au) [www.asacpropertygroup.com.au](http://www.asacpropertygroup.com.au)